

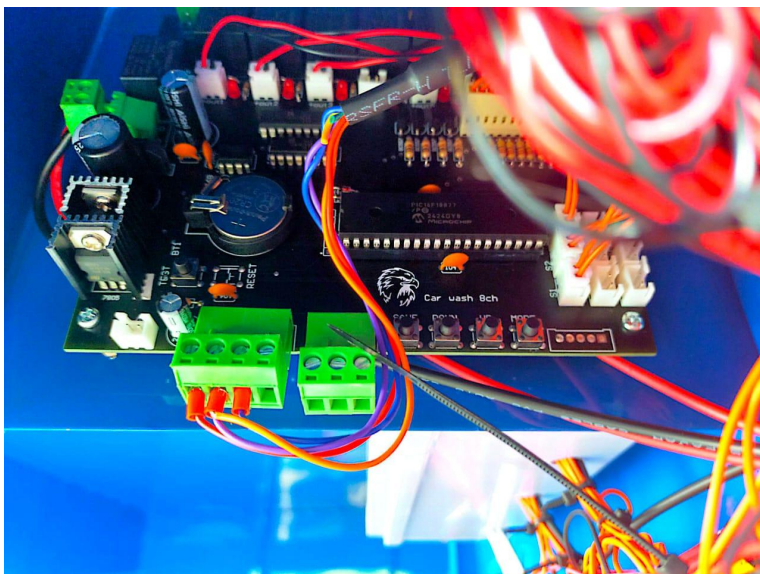
Detergent Refill Machine Laundry Device Installation Guide

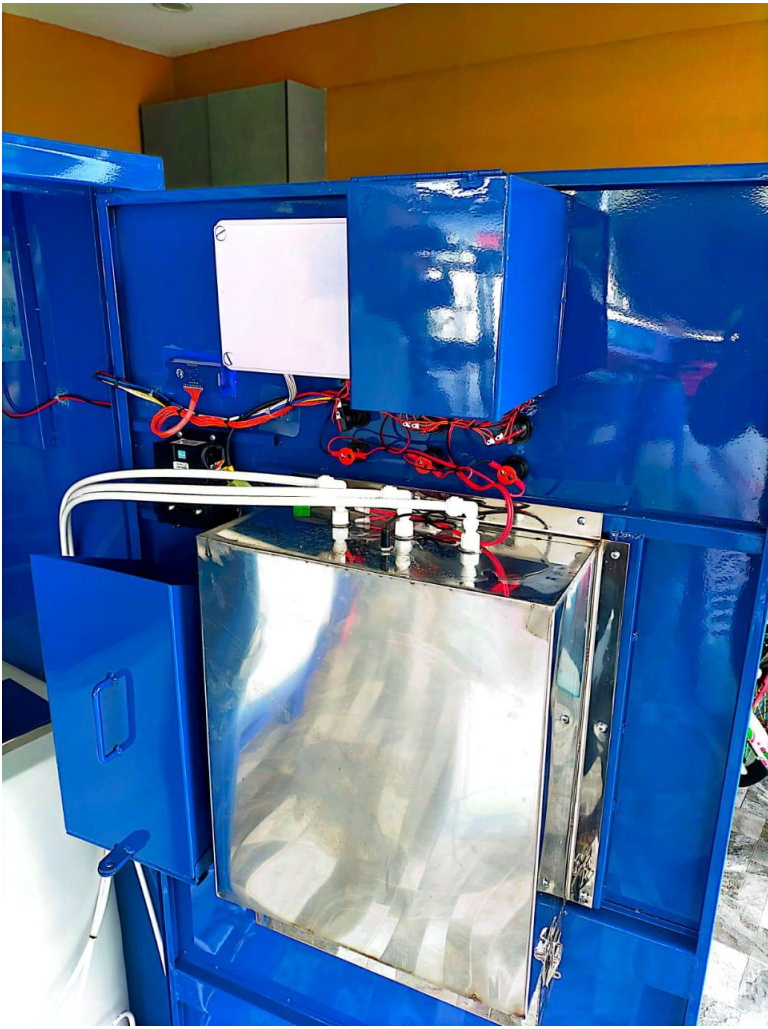
- [Type of Detergent Refill Machine](#)
- [Device & Equipment](#)
- [Steps for Installation on Detergent machine](#)

Type of Detergent Refill Machine

Type 1 :



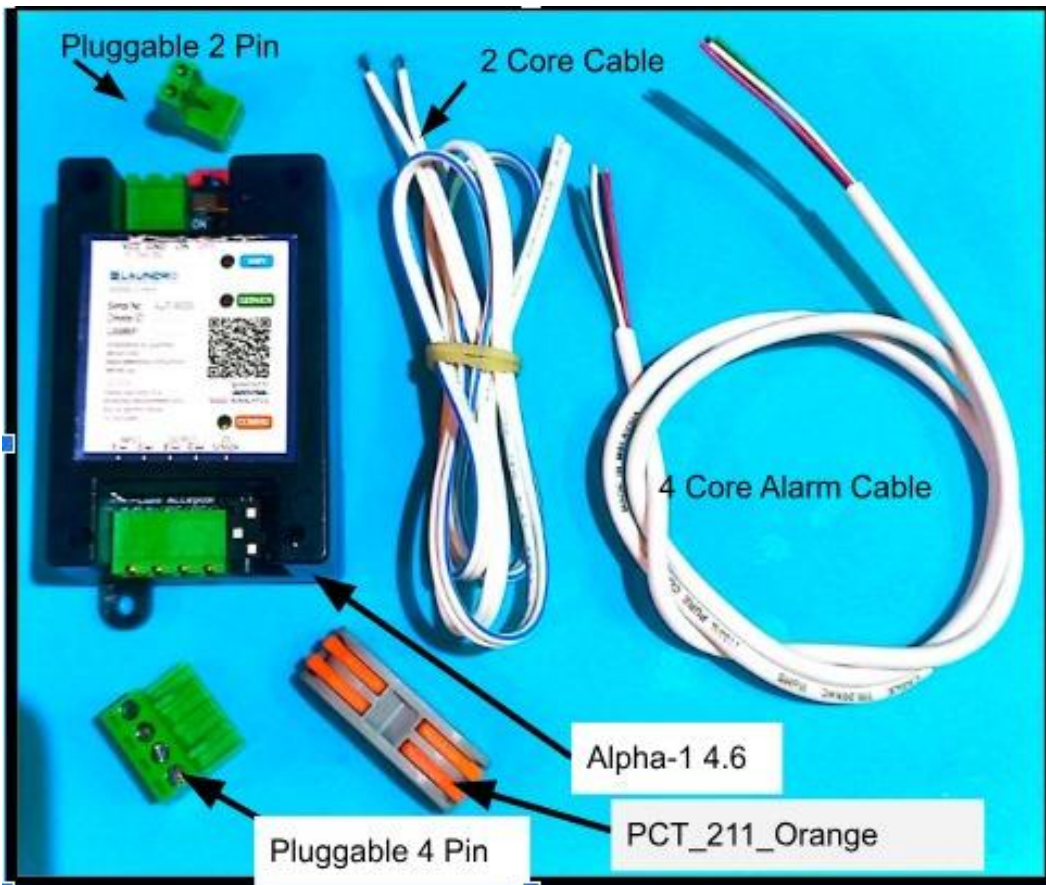






Type 2

Device & Equipment



Broadband Wifi :



Steps for Installation on Detergent machine

1. **Wi-Fi Setup :**

- A.Ensure Wi-Fi is ready with a strong signal to support the Alpha1 device.
- B. 2.4GHz is recommended.

2. **Device Placement :**

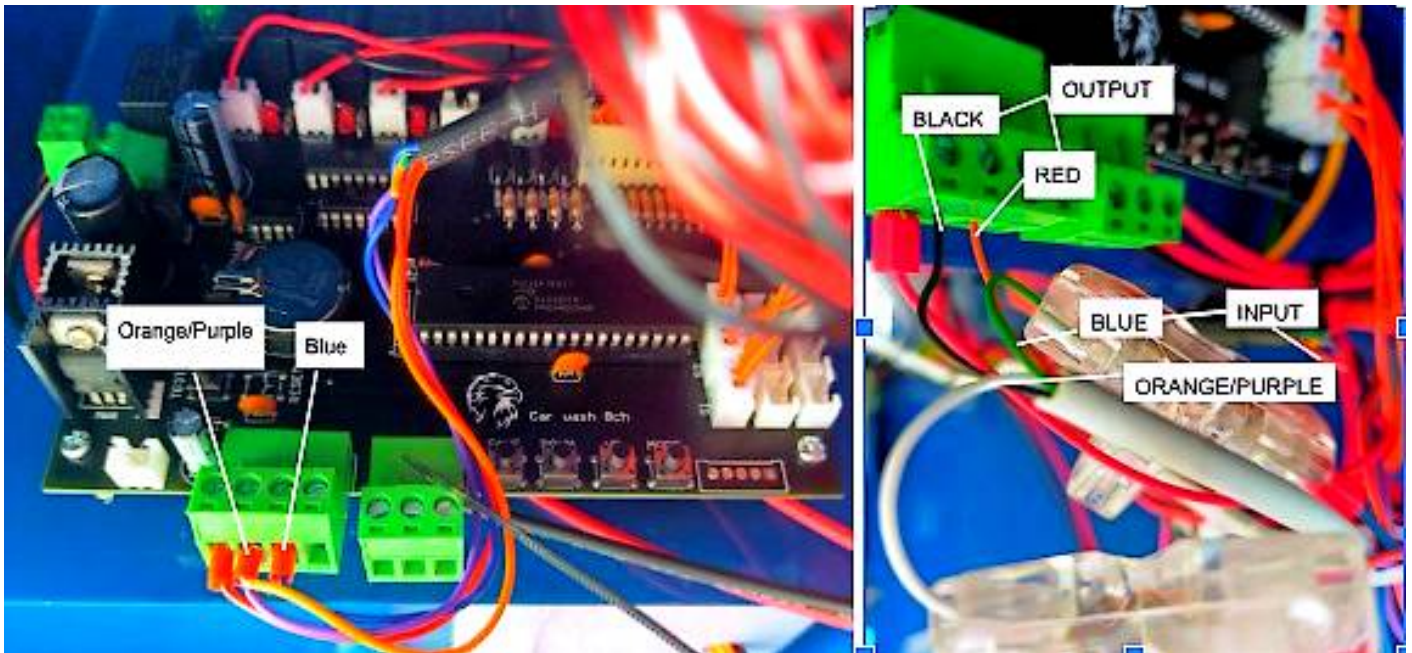
- A. Place the Alpha1 device as shown in Picture 1.
- b. You may place it elsewhere, but ensure it is safe and secure.

3. **Connect Positive + & Negative - From Device to Power Supply :**

4. **Power Connection**

- A.Power the device using the power supply & connect it to 12V





5. Cable Connection

- A. Disconnect both cables from the board (Orange/Purple & Blue).
- B. Use a 4-core cable to connect the input and output.
- C. Output Cable: Connect Black & Red to the Motherboard.
- D. Input Cable: Connect Green to Blue and White to Orange/Purple.