

Alpha-3 Manual

- [Alpha-3 Device](#)
- [Vending Machine Type A \(Vending A\)](#)
- [Bill Acceptor Type A \(Bill Acceptor A\)](#)
- [Firmware Update Procedure for Alpha3](#)

Alpha-3 Device

Alpha-1 version 4.3 is an upgrade which aims to ease the installation process. The diagram below shows an overview of what its wire connection looks like. There's primarily 2 major update in this version:

1. Device is connected directly to cloud
2. Smaller in size to allow easier handling

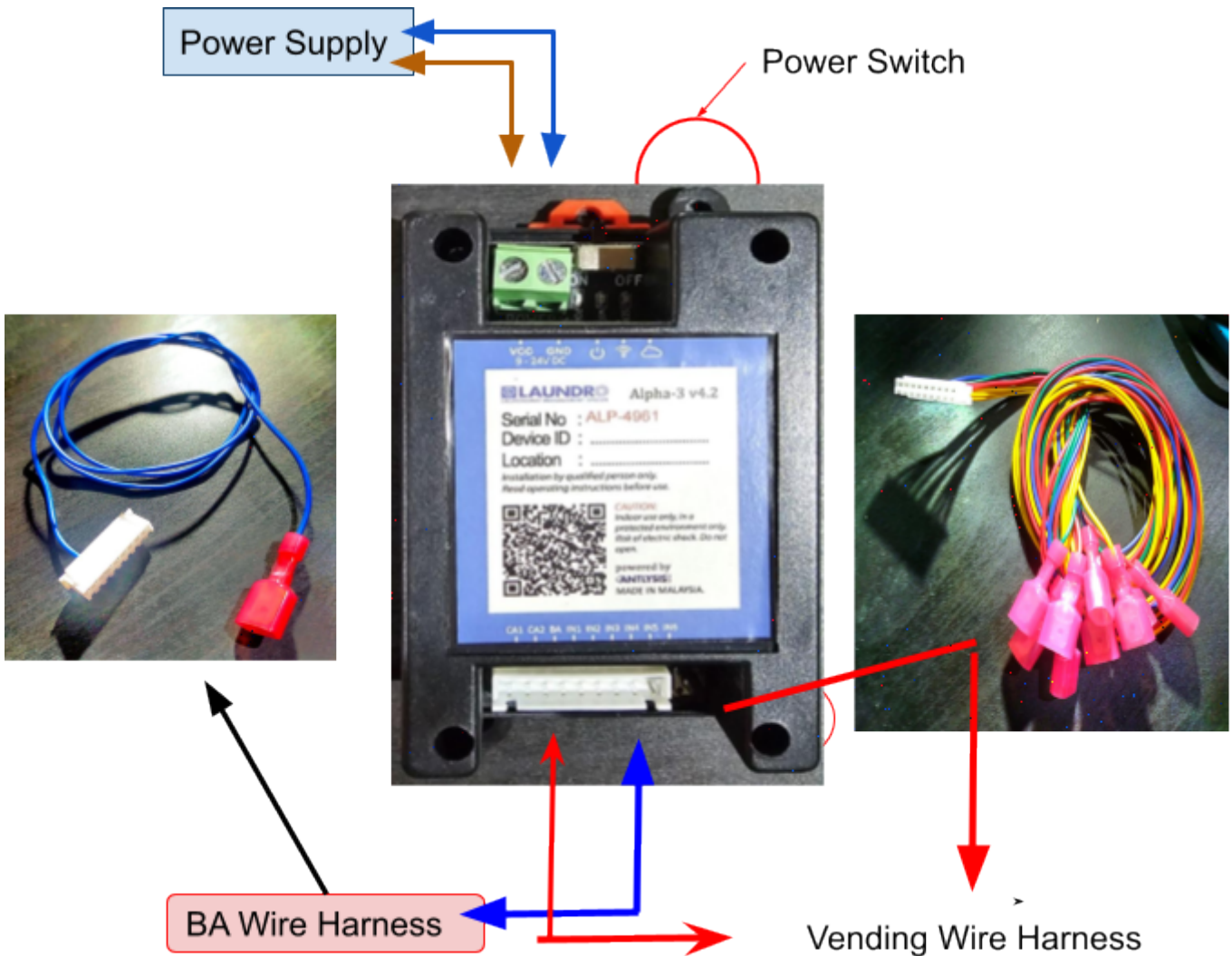


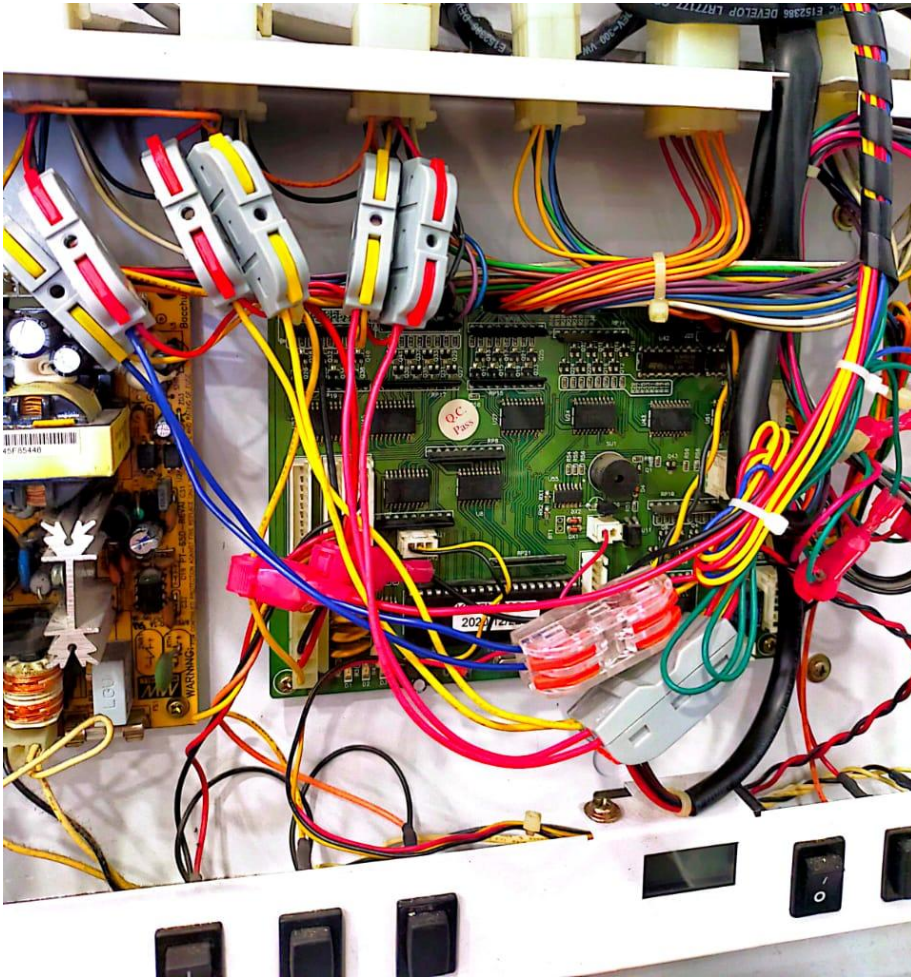
Figure 1: Alpha-1 version 4.3 Connection Overview

Vending Machine Type A (Vending A)

Vending Machine Type A (VendingA)

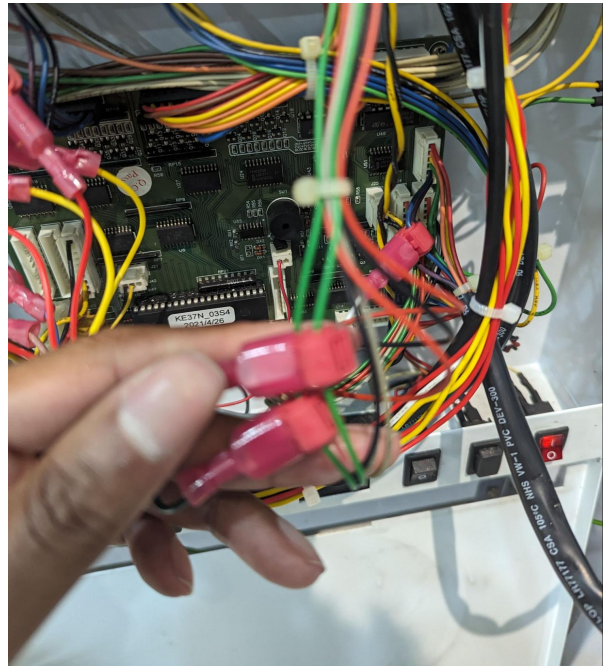
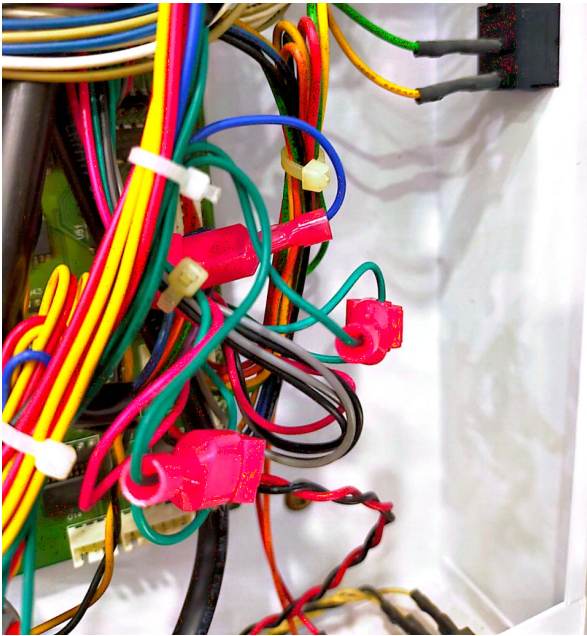
1) Vending machines that have up to 2 normally open pulse based coin acceptors, up to 6 item slots and a built-in normally open pulse based bill acceptor.

1. You will require the Vending A wire harness that has 9 wires on it.
2. Open up the vending machine and controller box.



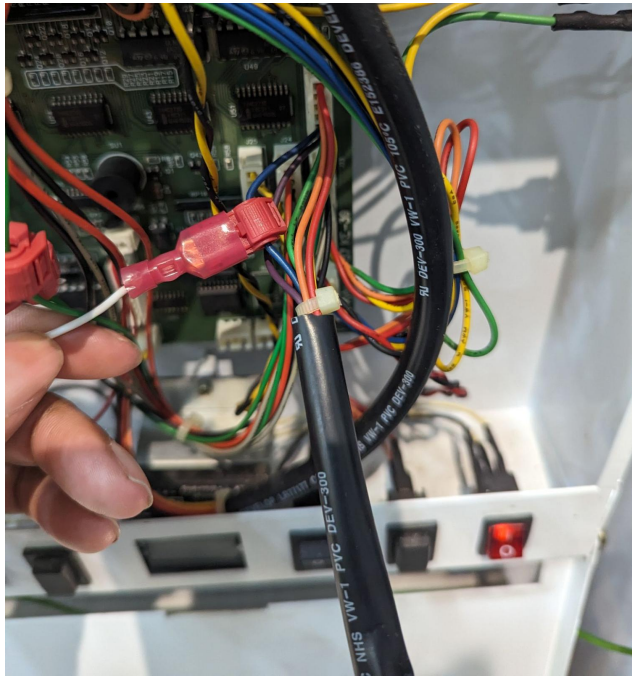
[Example: Vending A Mother board](#)

2) You will see the motherboard connections; connect the CA1 and CA2 terminals.



Example CA1 & CA2 connection

3) Attach 2 G-splice connectors to the green wires coming from the coin acceptors and connect them to CA1 and CA2 of the Alpha-3 wire harness.



[Example: BA connection](#)

4) Attach 1 G-splice connector to the blue wire coming from the bill acceptor and connect them to BA of the Alpha-3 wire harness.



[Example IN.1 to IN.6 \(RED/YELLOW\)](#)

connection

5) Attach 6 G-splice connectors to the red and yellow wires going to the dispenser motors. (Top 3 connectors on the left)

6) Starting from the right most, connect the following to the Alpha-3 wire harness

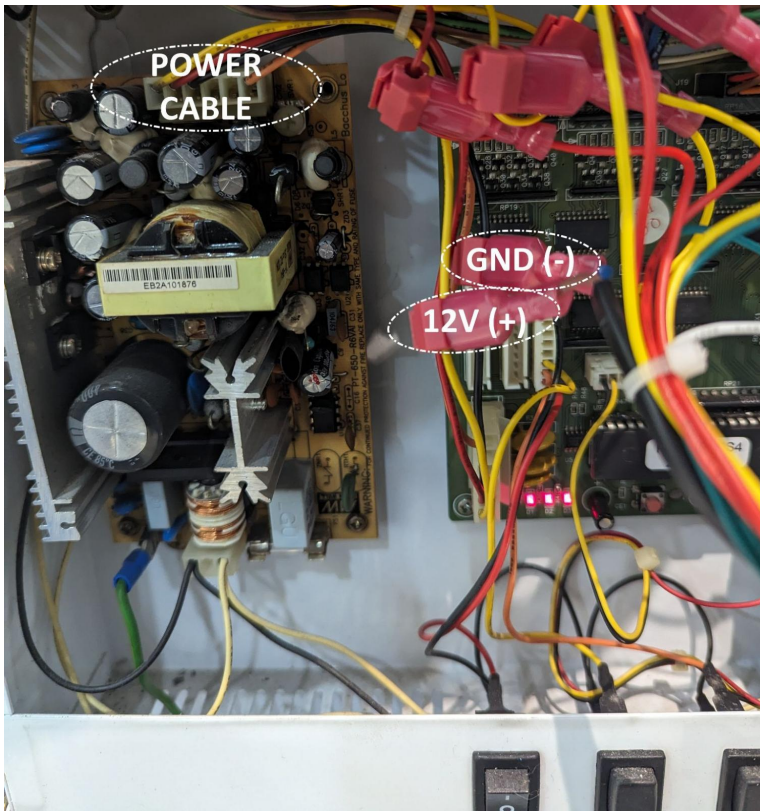
1. IN1 - Red wire of the right most connector.
2. IN2 - Yellow wire of the right most connector.
3. IN3 - Red wire of the next connector on the left.
4. IN4 - Yellow wire of the next connector on the left.
5. IN5 - Red wire of the next connector on the left.
6. IN6 - Yellow wire of the next connector on the left.



⚠ Attention: Can follow the colour on the in

numbers shows

7) Attach 2 G-splice connectors on the yellow and black wire of the power cable for 12V and GND respectively. Connect these wires to the power input of the Alpha-3.



[Example: Device connection from board](#)

8) Cable ties the wires neatly, and attach the Alpha-3 device above the controller box.

⚠ **Attention:** If any of the tests are not detected, check the connections and ensure they are tapped properly. For best results, connect the related connections together for better conductivity.

Bill Acceptor Type A (Bill Acceptor A)

1) Bill acceptors that use a single normally open pulse based signal. (e.g ICT Bill Acceptor)

1. You will require the BillAcceptor wire harness that has 1 wire on it.
2. Open up the machine and the bill acceptor.
3. Attach 1 G-splice connector to the blue wire coming from the bill acceptor and connect



[Example: BA1 connection from Bill Acceptor](#)

2) Take power for the device from the machine's 12V power supply using a 2-core wire, and run the wire to the device.



[Example: Power Supply 12v connection](#)

[for device](#)

3) Cable tie the wires neatly, and attach the Alpha-3 device where it won't interrupt the bill acceptor.

⚠ **Attention:** If any of the tests are not detected, check the connections and ensure they are tapped properly. For best results, connect the related connections together for better conductivity.

Firmware Update Procedure for Alpha3

Steps:

1. Log into your node cloud account

Laundro Node Cloud

Operator Login

Please enter your user name and password to login

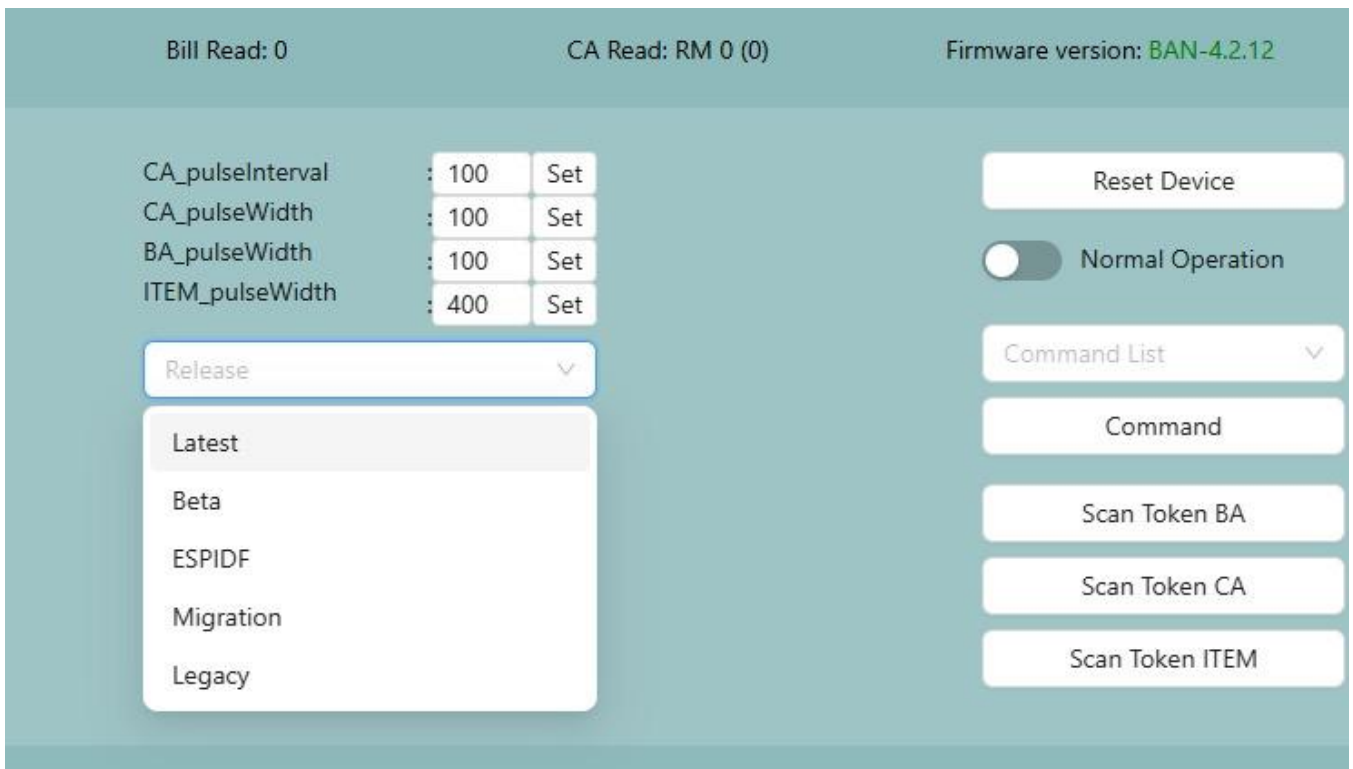
* Name

* Password

[Register Operator?](#)

Login

2. Navigate to the device that you intend to update and select "**latest**" in the release dropdown menu



3. Once you have selected "latest", click on "**Check update**" and you will see a message saying update is available beside the firmware version.

4. If update is available, click on "**Update**" and the device will update.

TAKE NOTE: Device will become offline for up to 1-3 minutes during the update process before coming back online

5. If update is successful, you will see a change in **Firmware version** and the device will come back online.

6. If update fails, try again when device comes back online for a few times until it is successful. If update still fails, report the issue.

Sometimes, restarting your router may help to fix update issues